

FRZ[®] 弗而兹电气

PRODUCTS DATASHEET

FRM000/00-LUN系列

AC690/700V/1000V DC440V

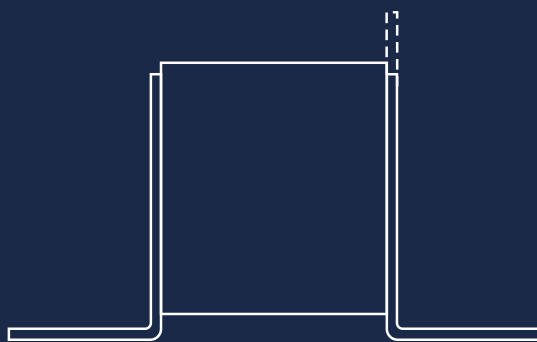
母线连接式快速熔断器

Busbar Connection Type Quick fuse

产品规格书

Technical Data Sheet

FRSI[®]



1.规格型号 Specification

1.1 额定电压Rated Voltage: AC690V/700V/1000V DC440V

1.2 额定电流 Rated Current: 10A~400A

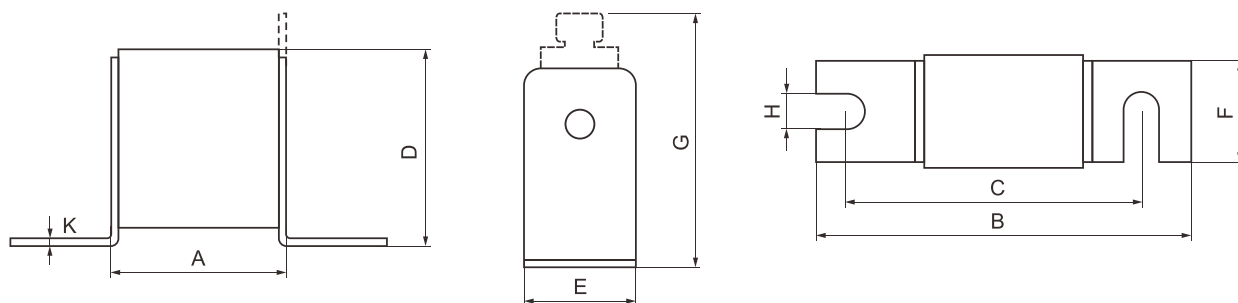
1.3 功能等级Functional Level: aR/gR

1.4 分断能力Breaking Capacity: I1=100kA

2.符合标准规范 Standard: IEC60269 GB/T13539 UL248

3.产品外形尺寸 Product Dimension

型号 Model	尺码 Size	安装方式 Installation	额定电压 Rated Voltage (V)	额定电流(A) Rated current	尺寸Dimension(mm)								
					A	B	C	D	E	F	G	H	K
FRM	000	LUN80(T)	AC690V/700V	10~315	54	100	78	40	21	20	51	8	2
	00	LUN80(T)	DC440V	25~400	54	100	78	51	30	28	67	10	2
		LUN80(T)	IEC/UL AC1000V	20~315	54	100	78	51	30	28	67	10	2

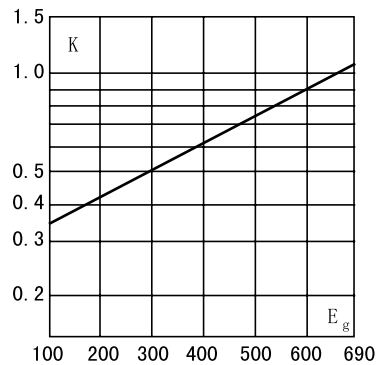


4.技术参数 Technical Parameters

4.1 弧前Pre-arcing 熔断Clearing 功率Watts Loss

型号 Model	尺码 Size	安装方式 Installation	电流(A) Rated Current	弧前I ² t Pre-Arcing	熔断I ² t Clearing	功率(W) Watts Loss	曲线 Curve
FRM	000	LUN80(T)	10	4	25	3.0	图 Figure1 图 Figure3
			16	7.5	40	5.5	
			20	12	75	7	
			25	19.5	126	9	
			32	41	260	10	
			40	70	450	12	
			50	119	750	15	
			63	220	1420	16	
			80	390	2520	19	
			100	700	4600	24	
			125	1220	8450	28	
			160	2330	16000	32	
			200	4240	27950	37	
			250	7800	51450	42	
			315	12000	80440	52	
FRM	00	LUN80(T)	25	20	120	6	图 Figure2 图 Figure4
			32	30	180	7	
			40	55	340	9	
			50	100	610	10	
			63	180	1120	12	
			80	320	2000	15	
			100	640	4100	20	
			125	1050	6880	25	
			160	1980	12900	30	
			200	3500	22900	35	
			250	6300	41800	45	
			315	10200	68200	55	
			350	13800	91300	60	
			400	18300	124600	70	

4.2 熔断I²t修正系数K Melting I²t Correction Factor K



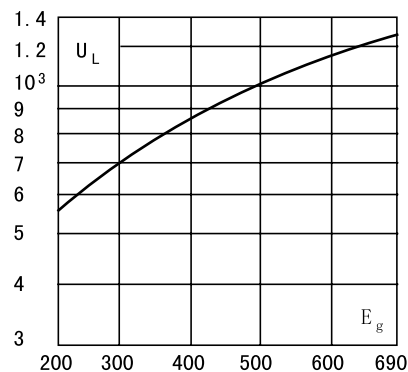
注：Eg为工作电压
Note: Eg is the working voltage

计算方法：I²t(修正)=I²t(额定)×K

Calculation Method:

I²t(correction) = I²t (rated) × K

4.3 电弧电压峰值 Peak Value of Arc Voltage



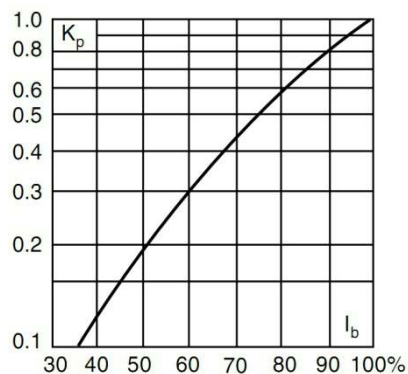
注：UL为电弧电压峰值；Eg为工作电压；此图为功率因数为15%的情况。

Note: UL is the peak value of arc voltage; Eg is the working voltage; This figure shows the case when the power factor is 15%.

4.4 功耗修正系数Kp Power consumption correction factor Kp

额定功耗已在4.1给出，低于额定电流的功耗可按下图计算

The rated power consumption is given in 4.1, and the power consumption below the rated current can be calculated as shown below.



计算方法：W(修正)=W(额定)×Kp

Calculation Method:

W (correction) = W (rated) × Kp

4.5 时间-电流曲线 Time-current characteristics curves

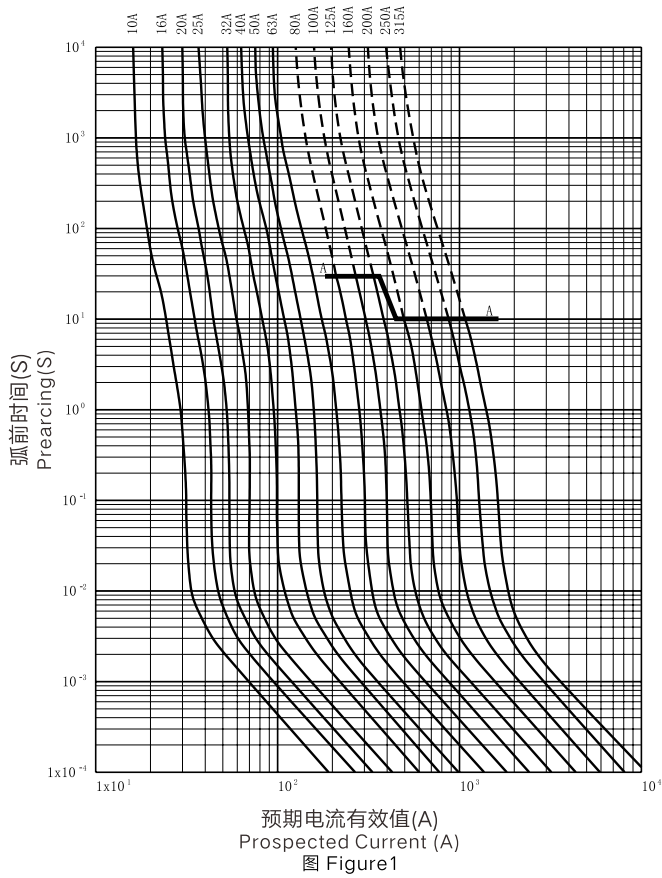


图 Figure1

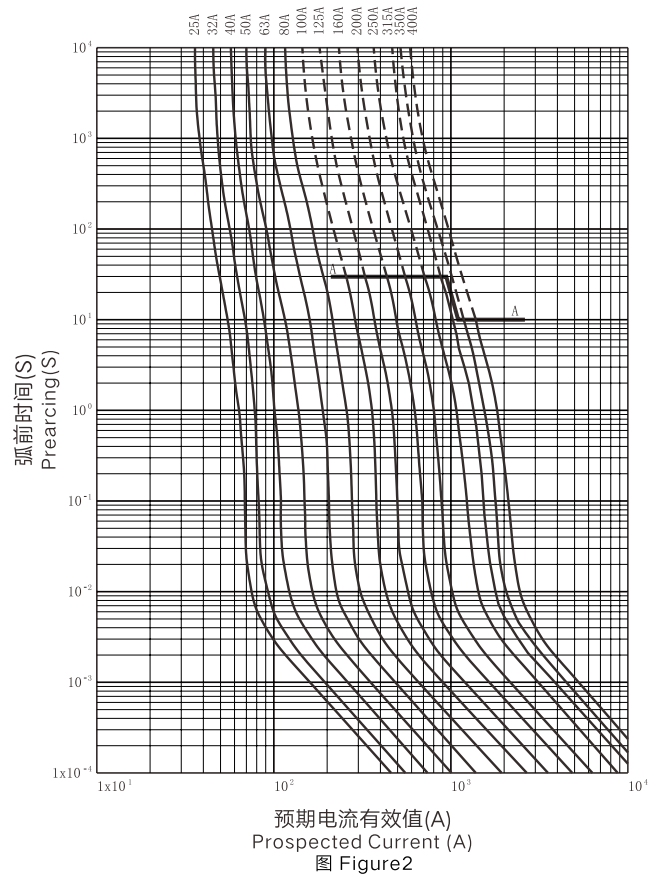


图 Figure2

4.6 截断电流特性 Cut-off current characteristics

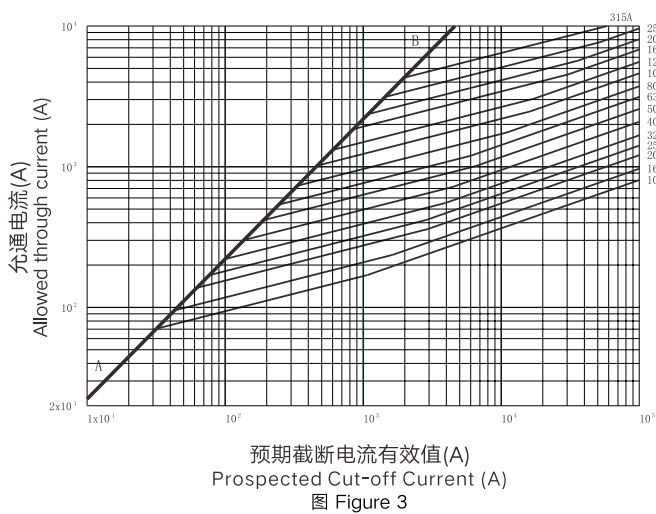


图 Figure 3

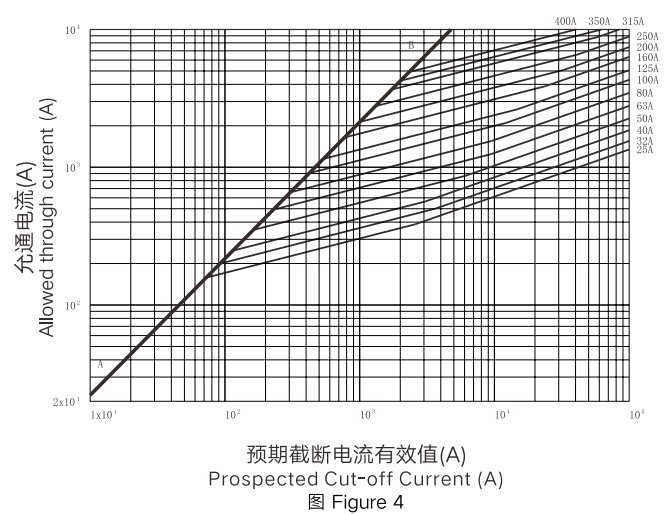


图 Figure 4

样本所述的产品资料以实物为准，若有变更本公司恕不另行通知，欢迎致电咨询。

The product information stated in the sample shall be subject to the material object.
If there is any change without prior notice, please call us for consultation.

FRZ[®] 弗而兹电气

地址：浙江省乐清市北白象镇东大街512号
Address: 512 Dong Dajie, Beibaixiang Town, Yueqing
City, Zhejiang Province

电话(Tel): 0577-6198 6868 传真(Fax): 0577-6198 6869 网站(Web): <http://www.frsidq.com>

